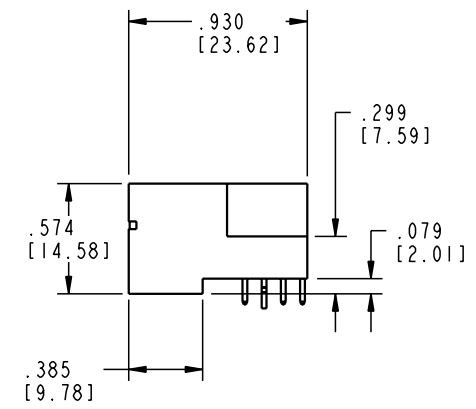
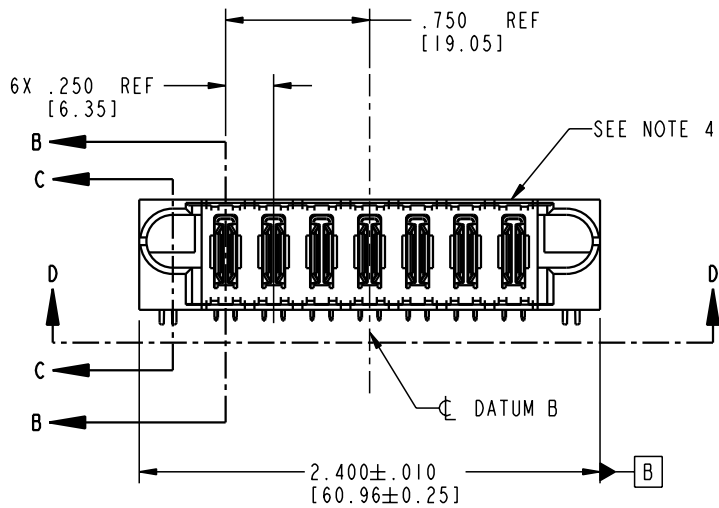
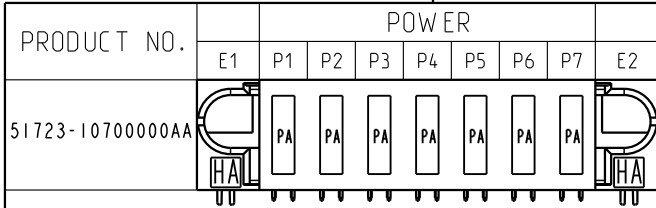


Tous droits strictement réservés. Reproduction ou communication o des tiers interdite sous quelque forme que ce soit sans autorisation écrite du propriétaire. Propriete de c FCI. Droits de reproduction FCI.



All rights strictly reserved. Reproduction or issue to third parties in any form whenever is not permitted without written authority from the proprietor. Property of FCI. Copyright FCI.



CODE	DIM "M" MATING LENGTH	CONTACT TYPE
PA	N/A [N/A]	POWER
HA	N/A [N/A]	HOLD-DOWN

mat'l code				SEE NOTE 2		tolerances unless otherwise specified		CUSTOMER		<b>ELECTRONICS</b> www.fciconnect.com	
ltr	ecm no.	dr	date	linear	.XX ± .01/0.X ± 0.3		COPY		 INCH/MM scale 1:1	title	
A	V02900	CGD	12/04/00		.XXX ± .005/0.XX ± 0.13		projection			7P	
B	V12845	JWS	01/04/02		.XXX ± .0020/0.XX ± 0.051					RIGHT ANGLE SOLDER HEADER	
				angles	0° ± 2°				product family		
				dr	J. SHAFFER	1/4/02			PwrBlade		code
				enr	M. MOSTOLLER	1/4/02			size		213
				chr	M. MOSTOLLER	1/4/02			dwg no		sheet
				appd	M. MOSTOLLER	1/4/02			A 51723-10700000AA		1 of 4
sheet index		revision sheet		B	B	B	B				
1		2		3	4						

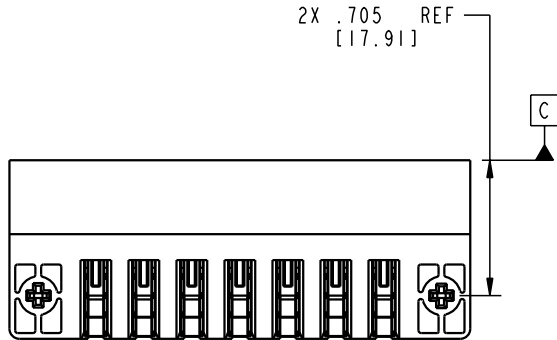
Pro/E 3 cage code 22526 4

Tous droits strictement réservés. Reproduction ou communication o des tiers interdite sous quelque forme que ce soit sans autorisation écrite du propriétaire. Propriété de c FCI. Droits de reproduction FCI.

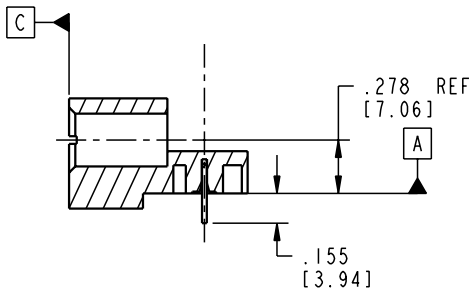


All rights strictly reserved. Reproduction or issue to third parties in any form whatever is not permitted without written authority from the proprietor. Property of FCI. Copyright FCI.

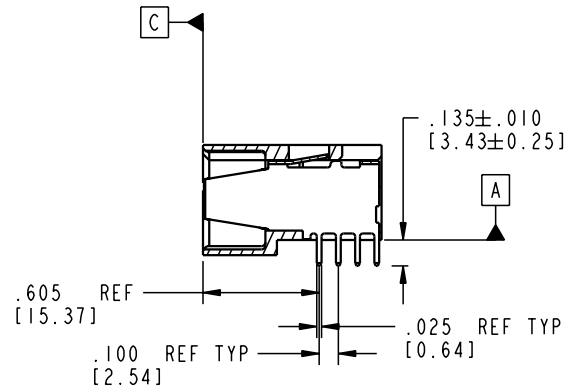
PRODUCT NUMBER  
51723-10700000AA



SECTION D-D



SECTION C-C



SECTION B-B

mat'l code				SEE NOTE 2		tolerances unless otherwise specified		CUSTOMER		<b>ELECTRONICS</b> www.fciconnect.com	
ltr	ecm no.	dr	date	linear	.XX±.01/0.X±0.3		COPY		projection	title	
B					.XXX±.005/0.XX±0.13		INCH/MM			7P	
					.XXXX±.0020/0.XXX±0.051		scale			RIGHT ANGLE SOLDER HEADER	
				angles	0°±?		1:1		product family		
				dr	J. SHAFFER	1/4/02			PwrBlade		code
				enr	M. MOSTOLLER	1/4/02			size		213
				chr	M. MOSTOLLER	1/4/02			dwg no		sheet
				appd	M. MOSTOLLER	1/4/02			A 51723-10700000AA		2 of 4
sheet index		revision sheet									

cage code 22526

Pro/E

PDM: Rev:B

STATUS: Released

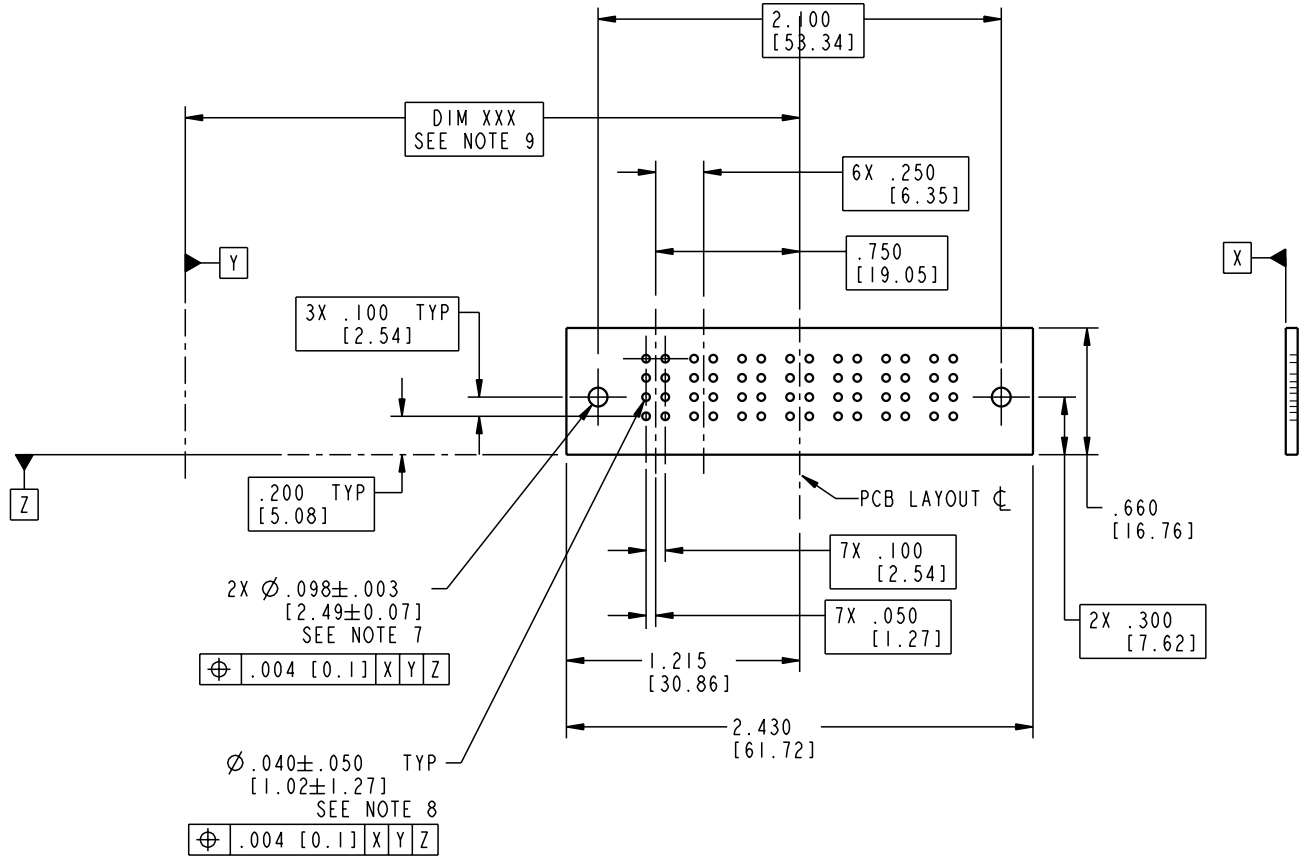
Printed: Aug 12, 2007

Tous droits strictement réservés. Reproduction ou communication o des tiers interdite sous quelque forme que ce soit sans autorisation écrite du propriétaire. Propriété de c FCI. Droits de reproduction FCI.

All rights strictly reserved. Reproduction or issue to third parties in any form, whatever is not permitted without written authority from the proprietor. Property of FCI. Copyright FCI.



PRODUCT NUMBER  
51723-1070000AA



RECOMMENDED PCB LAYOUT

mat'l code				SEE NOTE 2		tolerances unless otherwise specified		CUSTOMER		<b>ELECTRONICS</b> www.fciconnect.com	
ltr	ecn no.	dr	date	linear	.XX ± .01 / 0.XX ± 0.3	projection	COPY		title		
B				angles	.XXX ± .005 / 0.XX ± 0.13		7P		RIGHT ANGLE SOLDER HEADER		
				dr	.XXX ± .0020 / 0.XX ± 0.051	$0^\circ \pm \varnothing$	INCH/MM		product family		code
				enr	J. SHAFFER 1/4/02	scale	1:1		PwrBlade		213
				chr	M. MOSTOLLER 1/4/02			size		sheet	
				appd	M. MOSTOLLER 1/4/02			A		3 of 4	
sheet index		revision sheet									

cage code 22526

Pro/E

PDM: Rev:B

STATUS: Released

Printed: Aug 12, 2007

Tous droits strictement réservés. Reproduction ou communication o des tiers interdite sous quelque forme que ce soit sans autorisation écrite du propriétaire. Propriété de c FCI. Droits de reproduction FCI.



All rights strictly reserved. Reproduction or issue to third parties in any form, whenever is not permitted without written authority from the proprietor. Property of FCI. Copyright FCI.

PRODUCT NUMBER  
51723-1070000AA

NOTES:

1. DIMENSIONS AND TOLERANCES ARE IN ACCORDANCE WITH ASME Y14.5M, 1994 UNLESS OTHERWISE SPECIFIED.

CONNECTORS NOTES:

② HOUSING MATERIAL: UL 94 V-0 GLASS FILLED HIGH TEMP THERMO PLASTIC  
POWER CONTACT MATERIAL: COPPER ALLOY  
SIGNAL PIN MATERIAL: COPPER ALLOY

3. PLATING:

SIGNAL PINS: 30u"/0.76um Au OVER 50u"/1.27um Ni  
POWER CONTACTS: 50u"/1.27um Ni UNDER ALL WITH 30u"/0.76um Au ON CONTACT AREA AND SnPb ON PCB INTERFACE

④ "MANUFACTURER" NAME, P/N, AND DATE CODE TO APPEAR ON THIS SURFACE.

5. PRODUCT SPECIFICATION GS-12-149.

PCB - NOTES:

6. ALL HOLE DIAMETERS ARE FINISHED HOLE SIZE.

⑦ HOLD DOWN THROUGH HOLES ARE UNPLATED.

⑧  $\varnothing .0453 \pm 0.0010$  [1.151  $\pm$  0.025] DRILLED HOLES PLATED WITH 0.0003 [0.008] MIN SnPb OVER .001 [0.03] TO .003 [0.08] Cu PLATING TO ACHIEVE  $\varnothing .040 \pm .003$  [1.02  $\pm$  .07] HOLE.

⑨ "DIM XXX" TO BE DETERMINED BY THE CUSTOMER.

mat'l code		SEE NOTE 2		tolerances unless otherwise specified		CUSTOMER		<b>ELECTRONICS</b> www.fciconnect.com	
ltr	ecn no.	dr	date	linear	.XX±.01/0.X±0.3	COPY		projection	
B					.XXX±.005/0.XX±0.13	FCI			
				angles	.XXX±.0020/0.XX±0.051	INCH/MM		RIGHT ANGLE SOLDER HEADER	
				dr	J. SHAFFER 1/4/02	scale		product family	PwrBlade
				enr	M. MOSTOLLER 1/4/02	1:1		code	213
				chr	M. MOSTOLLER 1/4/02			size	dwg no
				appd	M. MOSTOLLER 1/4/02			A	51723-1070000AA
sheet index	revision sheet							sheet	4 of 4

cage code 22526

Pro/E

PDM: Rev:B

STATUS: Released

Printed: Aug 12, 2007